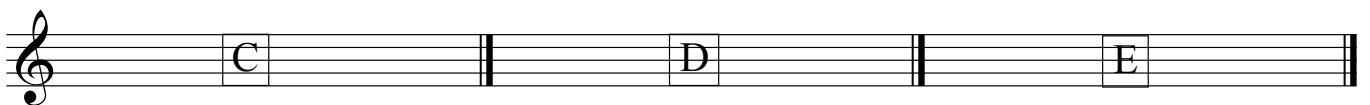
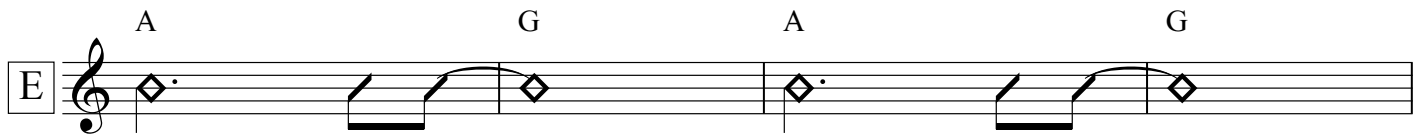
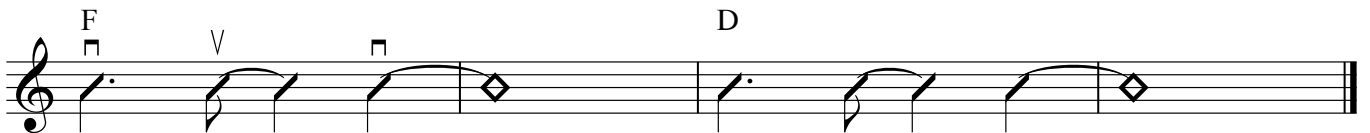
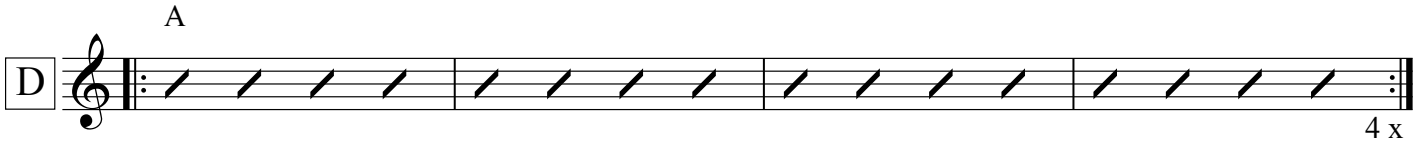
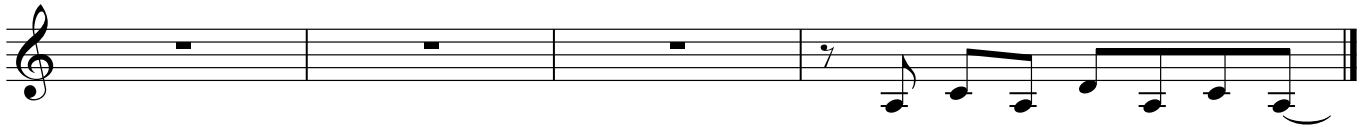


Whole Lotta Rosie

AC/DC

Arrangement Rene Schols



A musical staff in treble clef showing two measures. The first measure contains a chord box labeled 'C' and the second measure contains a chord box labeled 'D'. A double bar line separates the two measures.

A musical staff in treble clef starting with a chord box labeled 'F'. Above the first measure is a chord box labeled 'A'. The staff contains a melodic line with eighth and sixteenth notes. The final measure has a '3 x' marking below it, indicating a triplet.

A musical staff in treble clef containing a continuous melodic line of eighth notes.

A musical staff in treble clef starting with a chord box labeled 'D'' (two ledger lines below). The staff contains a melodic line with eighth notes and a sharp sign on one of the notes.

A musical staff in treble clef containing a melodic line with eighth notes and a sharp sign on one of the notes.

A musical staff in treble clef starting with a chord box labeled 'A'. The staff contains a rhythmic pattern of diagonal slashes, indicating a strummed chord.

A musical staff in treble clef starting with a chord box labeled 'F', followed by a chord box labeled 'D'. The staff contains a rhythmic pattern of diagonal slashes.

A musical staff in treble clef starting with a chord box labeled 'E', followed by a chord box labeled 'C'. The staff contains a rhythmic pattern of diagonal slashes. A '9 x' marking is at the bottom right.

A musical staff in treble clef starting with a chord box labeled 'A', followed by a chord box labeled 'G'. The staff contains a rhythmic pattern of diagonal slashes.

A musical staff in treble clef starting with a chord box labeled 'A'. The staff contains a rhythmic pattern of diagonal slashes.