

Rolling in the Deep

Electric Guitar

Adele

arrangement René Schols

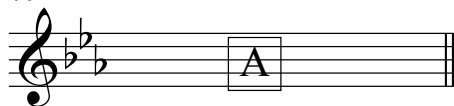
The sheet music is written for electric guitar in G minor (one flat) and 4/4 time. It consists of the following sections:

- Intro:** A single measure of a C minor chord (Cm) with a whole rest.
- Section A:** Measures 3-11. Features eighth-note patterns with chords Cm, Gm, Bb, Gm, and Bb.
- Section B:** Measures 12-15. Features eighth-note patterns with chords Ab, Bb, Gm, and Ab.
- Section C:** Measures 16-23. Features eighth-note patterns with chords Ab, Bb, Gm, G7, Cm, Bb, Ab, Ab, and Bb.
- Section C':** Measures 24-31. Features eighth-note patterns with chords Cm, Bb, Ab, Ab, Bb, Ab, and Bb.
- Section C'':** Measures 32-35. Features eighth-note patterns with chords Ab, Bb, Cm, and Bb.
- Section C''':** Measures 36-39. Features eighth-note patterns with chords Ab and Bb.

Chord symbols are placed above the staff. Section A includes a boxed 'A' at the end of the line. Section B includes boxed 'A', 'B', and 'C' at the end of the line. Section C' includes a boxed 'C' at the end of the line. Section C'' includes a boxed 'C'' at the end of the line. Section C''' includes a boxed 'C''' at the end of the line.

2
40

Electric Guitar



41 Cm Bb Ab Ab Bb



45 Cm Bb Ab Ab Bb



49

